

## Installation Manual - Shift Light for Mitsubishi Lancer CN9A/CP9A

This manual describes the installation and commissioning of the Shift Light module. Please read the entire manual carefully before starting the installation.

### 1. Safety Instructions

- Work on the vehicle's electrical system only if you have the required knowledge.
- Disconnect the vehicle battery before starting any work.
- Use appropriate tools and protective equipment.
- Observe all applicable regulations and safety standards.

### 2. Scope of Delivery

- Shift Light module
- Adhesive pad
- Shrink tubing
- This manual

### 3. Required Tools

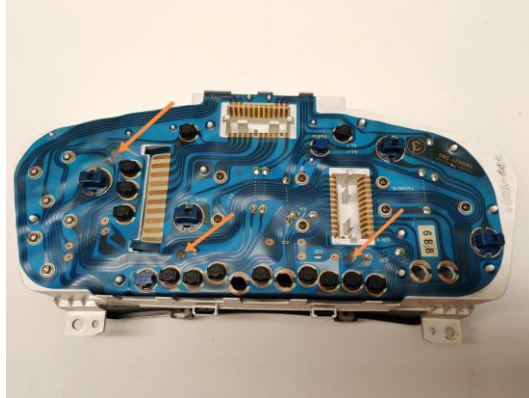
- Screwdriver
- Lighter or heat gun

### 4. Installation

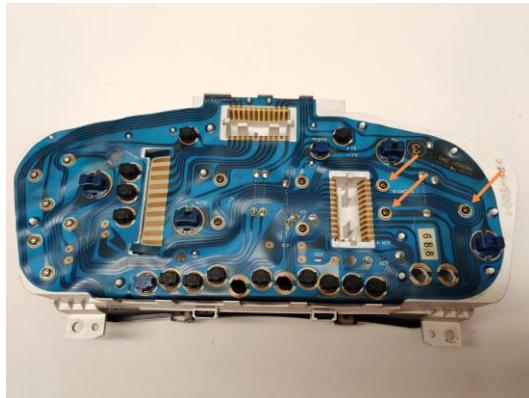
1. Remove the instrument cluster from the car (read the workshop manual of your car model)
2. Carefully remove the glass. If the brackets got stuck use a lever tool to widen the slots (place it from the opposite side)



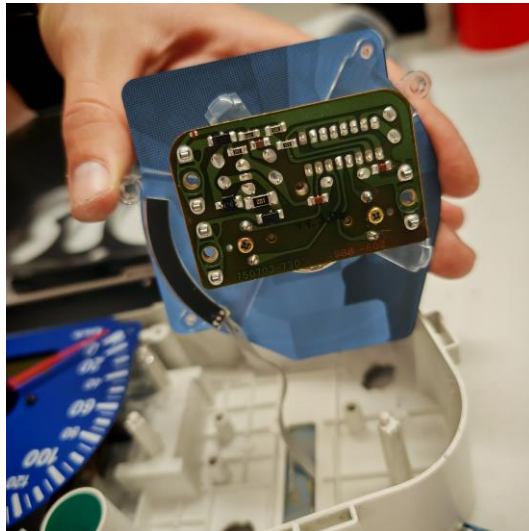
3. Remove the 3 screws on the back for the front frame and remove the frame



4. Unscrew the tachometer



5. Stick the LED-Board through the slot behind the tachometer



6. Glue the LED-Board to tachometer with adhesive pad. Align it as far as possible to the outside to prevent blocking the illumination

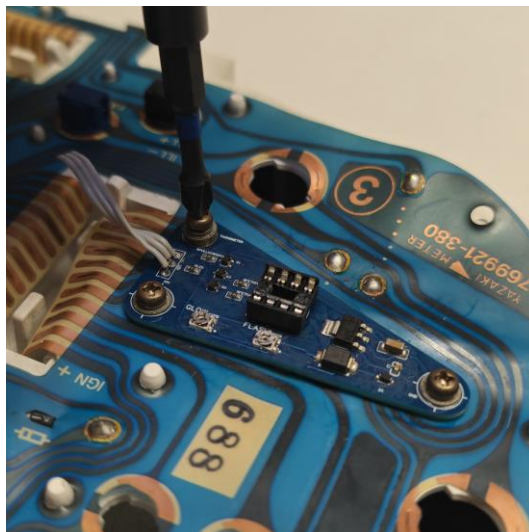
7. Slide the heat-shrink tubing over one of the screws and heat it up



8. Place the washers under the module and screw it to the tachometer. The screw with the heat-shrink tubing must be inserted at the top.

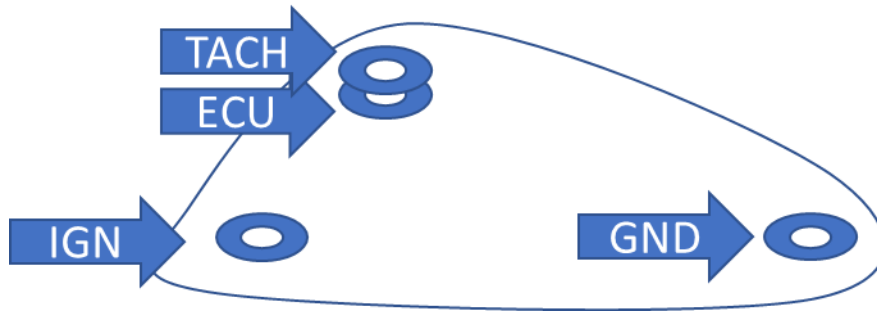


9. Reassemble everything



### Wiring Diagram (Example)

The following diagram shows a typical connection of the Shift Light module:



## 5. Commissioning

1. Reconnect the vehicle battery.
2. Switch on the ignition. The Gauge Sweep sequence should appear. The tachometer shows the shift point RPM
3. Check the functionality of the Shift Light (e.g., by increasing engine speed).
4. Adjust settings on the module if necessary
  - a. To adjust the flashing RPM adjust the "FLASH" potentiometer
  - b. To adjust the RPM range before flashing adjust the "RANGE" potentiometer